

Telecom Protection Technologies



Baluns & Patch Panels Catalogue



Telecom Protection Technologies Limited

Unit 1A Garden Close
Langage Industrial Estate
Plympton, Plymouth
PL7 5EU

Tel: 01752 346096 Fax: 01752 338493
E-mail: sales@tpt.uk.com
Web: www.telecom-protect-tech.co.uk

Internal Contacts Sales

Mr Clive Eaton
E-mail: Clive.Eaton@tpt.uk.com

Internal Contacts Technical

Mr David Vosper
E-mail: David.Vosper@tpt.uk.com

Mr Jonathan Eaton
E-mail: Jonathan.Eaton@tpt.uk.com

For all customers specific design requirements:
Mr David Vosper



Tel: (01752) 346096

Company Reg: No. 2851605 Vat No: 591 4653 20
Reg. Office c/o Greenwoods Communications Ltd. Jeynes House,
Highway Point, Gorsey Lane, Coleshill Birmingham B46 1JU

BALUN RANGE



PART NUMBER: TPTBA03BN
STYLE 3 BNC



PART NUMBER: TPTBA22BN
TYPE 22 BNC RJ45



PART NUMBER: TPTBA0343
STYLE 3 TYPE 43



PART NUMBER: TPTBA13BN
STYLE 13 BNC



PART NUMBER: TPTBA13IDC
STYLE 13 IDC KRONE



PART NUMBER: TPTBA1843
STYLE 18 TYPE 43



PART NUMBER: TPTBA02BN
STYLE 2 BNC



PART NUMBER: TPTBA0243
STYLE 2 TYPE 43



PART NUMBER: TPTBA2043/L
STYLE 20 TYPE 43



PART NUMBER: TPTBA07BN
STYLE 2 BNC DOUBLE



PART NUMBER: TPTBA1343
STYLE 13 TYPE 43



PART NUMBER: TPTBA0843
STYLE 8 TYPE 43



PART NUMBER: TPTBA1643
STYLE 13 1.6/5.6



PART NUMBER: TPTBA03BN
STYLE 2 BNC QUAD



TYPE 43 - RJ45

Description

CCITT G703 Balun

Single Circuit Unit - Rack Mounted

RJ45 Pin Connection - TX = 1 & 2, RX = 4 & 5



STYLE 13 BNC OR TYPE 43 TO KRONE IDC

Description

Style 13 IDC Krone

IDC Connector



TYPE 3 - BNC

Description

CCITT G703 Balun

Single Circuit Unit

RJ45 Pin Connection - TX Pins 1 & 2, RX Pins 4 & 5



BALUN STYLE 2

Description

CCITT G703 Balun, Single Circuit Unit, BNC-RJ45 - RJ45

Dimensions 86mm x 86mm x 40mm - TX Pins 1 & 2

Wall Mounted - RX Pins 4 & 5

Alterna- TYPE 43 RJ45

BNC RJ45



BALUN STYLE 2

Description

CCITT G703 Balun

Single Circuit Unit, BNC - RJ45

Wall Mounted - TX Pins 1 & 2, RX Pins 4 & 5



1.6/5.6 SIEMENS CONNECTOR TO RJ45

Description

CCITT G703 Balun

Single Circuit Unit

RJ45 Pin Connection - TX Pins 1 & 2, RX Pins 4 & 5



TYPE 43 - RJ45

Description

CCITT G703 Style 8 Balun

Single Circuit Unit

Rack Mounted - TX Pins 1 & 2, RX Pins 4 & 5



TYPE 22 BNC - RJ45

Description

BNC Coaxial connectors

19" Panel Mounting fixings



BALUN STYLE 7

Description

CCITT G703 Balun, 2 Circuit Unit - RJ45 Pin Connection

BNC - RJ45 - TX Pins 1&2, Dimensions 86mm x 86mm x 40mm - RX Pins 4&5

Wall Mounted

Alternatives TYPE 43 RJ45



BALUN STYLE 6

Description

CCITT G703 Balun, 4 Circuit Unit - RJ45 Pin Connection

BNC -RJ45 - TX Pins 1&2, Dimensions 146mm x 86mm x 40mm - RX Pins 4&5

Wall Mounted

Alternatives TYPE 43 RJ45

BALUN STYLE 20

BALUN STYLE 20

Description

- High performance high density design options
- Easy to install - no tools needed, easy to re-route / jumper
- Up to 48 ISDN circuit in 2U 19" panel
- Approved and used by major OEM & telecom operators worldwide
- Direct Installation onto High Density DDF Blocks
- Positive cable Connection, Easy to re-route



A versatile G.703, 75 ohm to 120 ohm Balun designed for quick, secure, high-density installations and providing a high level performance.

Conforms to the requirements of ITU G.703 with low signal loss. The Balun allows transmit and receive data carried over 75 ohm coaxial unbalanced transmission lines to be converted into a balanced 120 ohm signal onto twisted pair using an RJ45 connector.

Mechanical Specification:

Connection Method 75 ohm, Type 43; 120 ohm, RJ45
RJ45 Pin Out Configuration TX ~ Pins 1 & 2 RX ~ Pins 4 & 5

Part No.

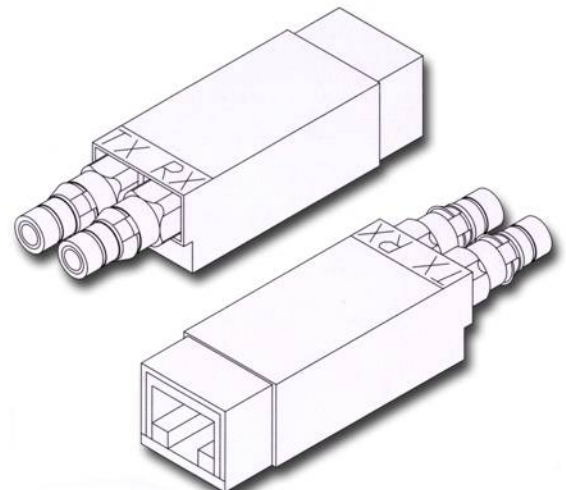
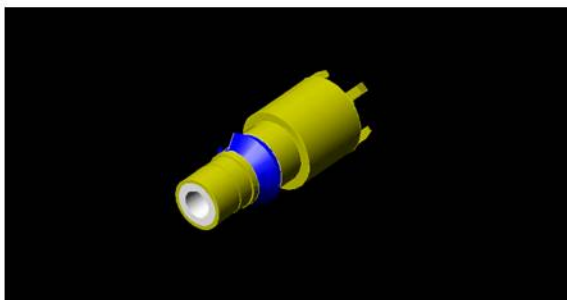
TPTBA2043/L Left handed version. Housing colour Black
TPTBA2043/R Right handed version. Housing colour Grey

Only applies for DDF installation applications

DUAL BALUN STYLE 20

Description

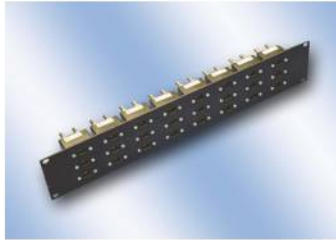
- High Density DDF Block for Style 20 Type 43 Balun
- Test Load Impedence - 75 Ohm (one Co-axial Pair), 120 Ohm (one Symmetrical Pair)
- DC Resistance - 0.169 Ohm (max) (120 Ohm), 0.146 Ohm (max) (75 Ohm)
- Return Loss - (75 Ohm - 120 Ohm, 120 Ohm - 75 Ohm), 51 - 102 KHz 12dB min, 102 - 2-48 KHz 18Db min, 2048 - 3072 KHz 14Db min
- Insertion Loss (both directions) 50 kHz-10,000 kHz <0.5dB <0.25 ty
- Overvoltage Protection - 600V rms
- Connection Method - 75 Ohm Type 43,120 Ohm RH45



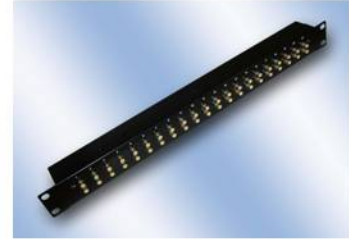
PATCH PANELS



PART NUMBER: 24 or 48 way, 1U 19"
Patch Panel, RJ45 front mount, 50 way Telco



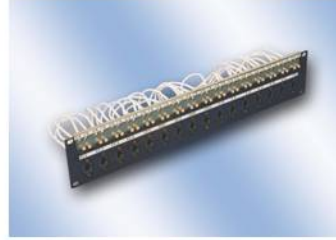
PART NUMBERS
24 Way Part Number: TPT PPBA2U
16 Way Part Number: TPT PPBA1U



PART NUMBER: TPTPPBA1U2043/21/2



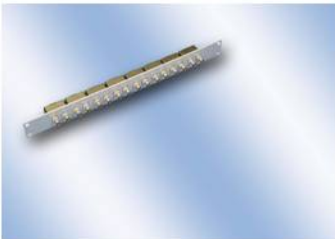
PART NUMBER: TPT PPBAR2U



PART NUMBER : TPT PPBAS18



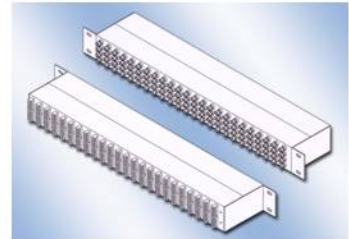
Part Number : TPT PPBA2043



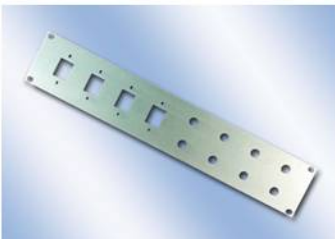
PART NUMBER: TPTPP 1U08BN



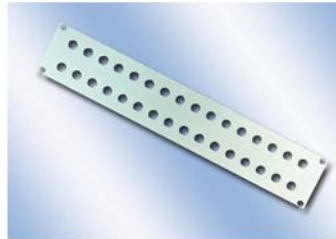
PART NUMBER : TPTBA0843



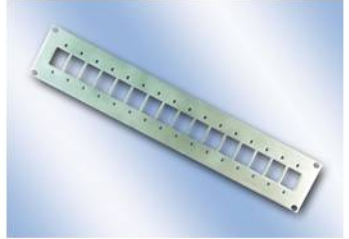
PART NUMBER : TPT PPBA204396



PART NUMBER : PP/BNRJ/DE



PART NUMBER : PP/BNBN/DE



PART NUMBER : PP/RJRJ/DE



PART NUMBER : TPTBA204364



PART NUMBER : PP4332



PART NUMBER : TPT PP 16BNC37DS

TELECOMS BALUNS

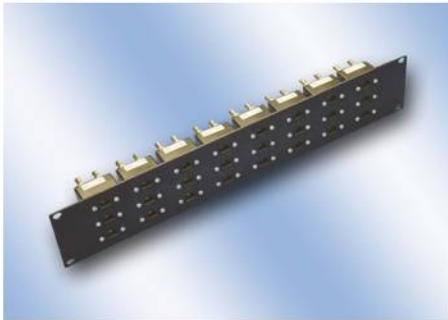
DUAL PATH TELECOMS BALUNS

75 Ohm / 120 Ohm Baluns for ISDN Termination on Digital Transmission Systems

Design Features: Compact Design, Packaged to meet Customer requirement, Low signal loss Conforming to the requirements of C.C.I.T.T G703, the Baluns allow Transmit (TX) and receive (RX) Data, carried over 75Ohm Co-axial unbalanced transmission lines to be converted into balanced 120 Ohm signal, onto Twistedpair using RJ45 Connector.

Electrical Specification (in accordance with the requirements of C.C.I.T.T G703 - 1991)

- 1 **Test Load Impedance:** 75 Ohm (one Co-axial Pair), 120 Ohm (one Symmetrical Pair)
- 2 **DC Resistance:** 0.169 Ohm (max) (120 Ohm), 0.146 Ohm (max) (75 Ohm)
- 3 **Return Loss:** (75 Ohm – 120 Ohm.120 Ohm – 75 Ohm), 51 – 102 KHz 12dB min, 102 – 2048 KHz 18dB
- 4 **Overvoltage Protection:** 6000V rms
- 5 **Connection Method:** 75 Ohm BNC Socket or Type 43, 120 Ohm RJ45 Plug or Socket



**24 Way Part Number: TPT PPBA2U/
16 Way Part Number: TPT PPBA1U/**

(If Baluns are required please state how many and (If Baluns are required please state how many and style e.g BNC or Type 43 after the /)

Patch Panel holding 24 & 16 BNC - RJ45 Dual Baluns
Black Anodised Aluminium
Size : 1U for 16 way & 2U for 24 way



Part Number : TPT PPBA2043/

(If Baluns are required please state how many after the /)

Patch Panel holding 48 Type 43 - RJ45 Dual Baluns
Grey Powder Coated
Size : 2U



Part Number : TPT PPBAR2U/

(If Baluns are required please state how many what style e.g. BNC or Type 43 & what front presentation is wanted wither it be BNC, Type 43 or RJ45 /) Type 43 or RJ45 /)
Patch Panel holding 16 BNC - RJ45 Dual Baluns
Grey powder coated
Size ; 2U



Part Number TPTPPBA1U2043/21/2

CCITT G703. 1U High Density Panel Holding
21 dual Baluns. Type 43 to RJ45
Colour Black



PART NUMBER : TPTBA204364

Fully loaded recessed patch panel with 64 x Style 20 Dual baluns.

RJ45 presentation
Size: 3U



TPTPPBAS08/16

Fully loaded patch panel holding upto 16 Type 43 - RJ45 Dual Balun

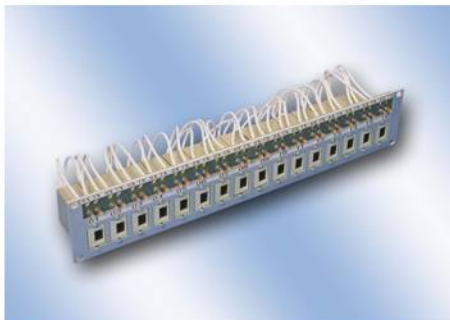
Size: 2U



PART NUMBER : PP4332

High Density DDF Block, For the style 20 Type 43 Balun

Left hand version style 20, Housing colour is black.
Right hand version style 20, Housing colour is grey.
Only applies for DDF installation applications.
This is to allow for the correct orientation of the balun



PART NUMBER : TPTBA0843

CCITT G703 Style 8 Dual Balun, Single Circuit Unit, Type 43 - RJ45 Rack Mounted
RJ45 Pin Connection TX = 1 & 2, RX = 4 & 5

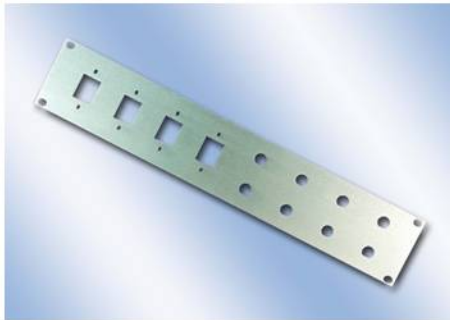
PART NUMBER : TPT PPBAS18

Patch Panel holding up to 16 Type 43 - RJ45 Dual Balun,
Black powder Coated Aluminium
SIZE "1U



PART NUMBER : TPT PP 16BNC37DS

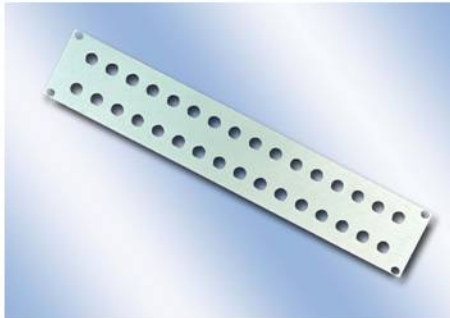
Patch Panel holding up to 16 BNC
Female 37 way D Sub
powder Coated Aluminium
Size 1U 19"



Part Number : PP/BNRJ/DE

4 Sets of BNC Facing plus of BNC Facing plus 4 Sets of RJ45 Facing
Anodised Aluminium
Size 2U

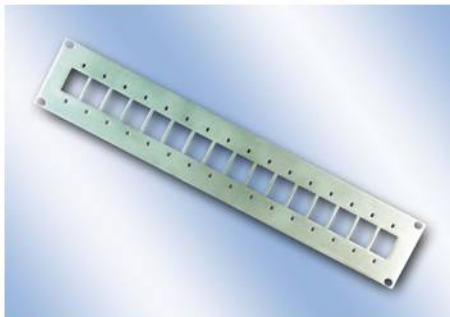
(If Baluns are required please state how many after the /)



Part Number : PP/BNBN/DE

16 Way Front Mounting Panel for style 3 Baluns - BNC Facing
2U Size

(If Baluns are required please state how many after the /)



Part Number : PP/RJRJ/DE

16 Way Front Mounting Panel for style 3 Baluns - RJ45 Facing

Anodised Aluminium
Size 2U

(If Baluns are required please state how many after the /)



24 way, 1U 19" Patch Panel, RJ45 front mount, 50 way Telco

connector, rear mount Improved installation time and cost
Applications include 2 wire Telephony and Digital circuits
High quality, high reliability
Black powder coat finish

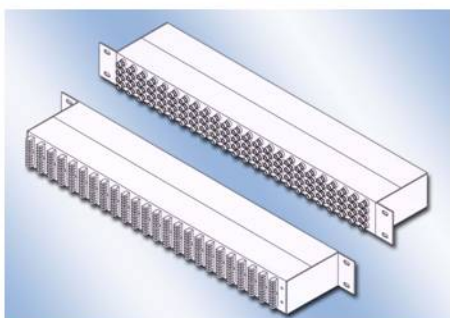


PART NUMBER : TPT BA1843

CCITT G703 Balun, Single Circuit Unit, Type 43 - RJ45 Rack Mount
RJ45 Pin Connection TX = 1 & 2, RX = 4 & 5

PART NUMBER : TPT PPBAS18

Patch Panel holding up to 16 Type 43 - RJ45 Dual Balun,
Black powder Coated Aluminium
SIZE 2U



PART NUMBER : TPT PPBA204396

Patch panel holding up to 48 style 20 Baluns Type 43 to krone
Black powder Coated Aluminium
Size 1U